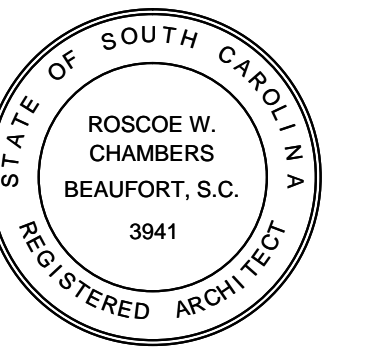


**FIRE & RESCUE
HEADQUARTERS
EXPANSION**

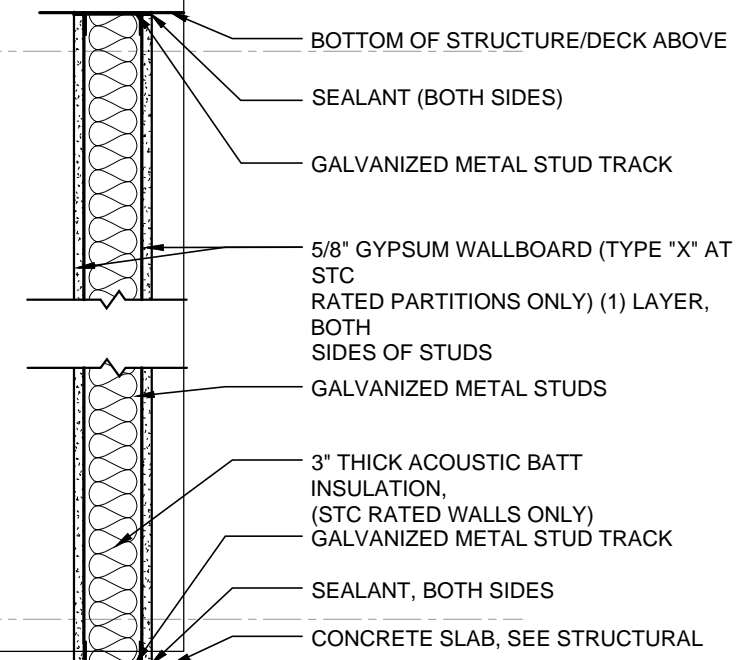
MABLE T. WILLIS BLVD.
COLLETON COUNTY
SOUTH CAROLINA

COLLETON COUNTY

R.W. CHAMBERS, ARCHITECT
P.O. BOX 1181
BEAUFORT, S.C. 29901



CONSULTANTS

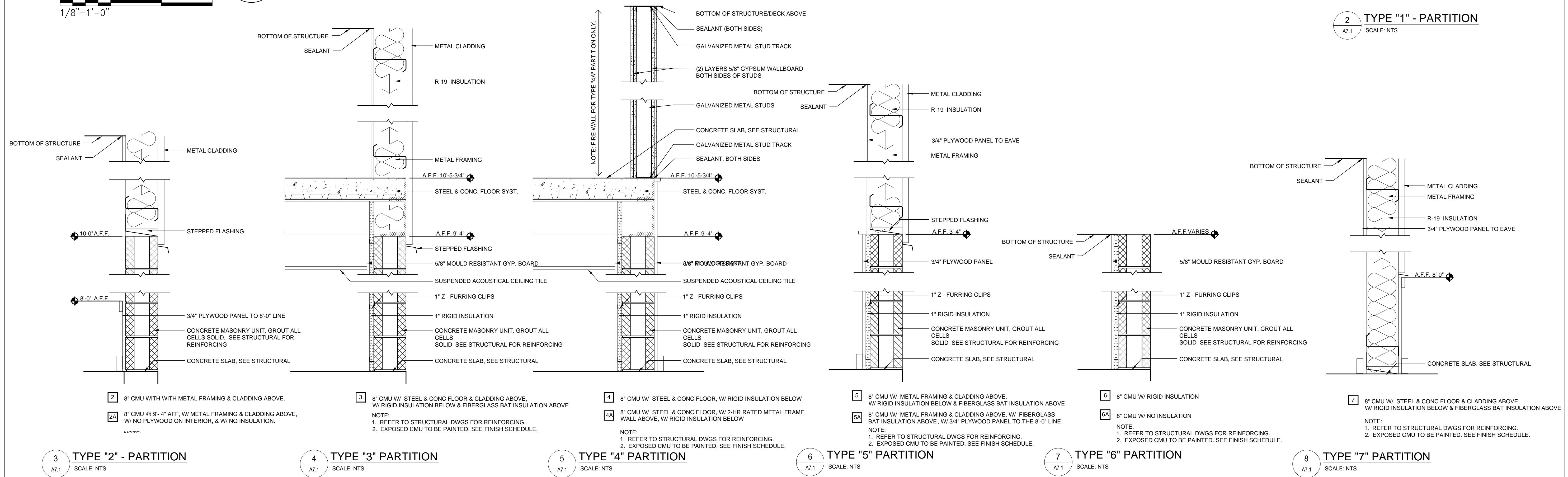
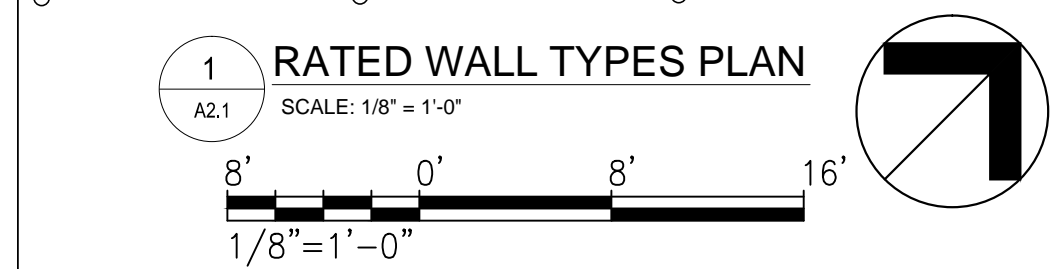


- 1 3 5/8" METAL STUDS @ 24" O.C. (STC 45)
- 1A 3 5/8" METAL STUDS @ 24" O.C. (STC 45), W/ 5/8" GYP. BOARD ON ONE SIDE ONLY.

NOTE:
ALL TOILET ROOMS SHALL HAVE 5/8" CEMENTITIOUS BACKER BOARD WITH
CERAMIC TILE WAINSCOT. PROVIDE 5/8" MOISTURE RESISTANT GYPSUM
WALLBOARD ABOVE WAINSCOT LEVEL.

2 TYPE "1" - PARTITION

A7.1 SCALE: NTS



	09/23/2013	REVISION-1
AUGUST 2013		CD
MARK	DATE	DESCRIPTION

PROJECT NO:	2012.017.00
MODEL FILE:	JOB#
DRAWN BY:	JHN
CHECK'D BY:	RWC
DATE:	AUGUST 2013
CPY	

SHEET TITLE

FLOOR PLAN WALL TYPES & FIRE WALLS

A2.1