

LEGEND

- DUPLEX RECEPTACLE, NEMA 5-20R, OR MATCH EQUIP. PLUG, GROUNDED.  
W/ 10' AFF. UNO. 'C' = MT. ABOVE COUNTER.
- GFI  
SAFE AS ABOVE WITH WEATHERPROOF COVER
- NIP  
SAFE AS ABOVE WITH GROUND FAULT INTERRUPTER
- 250V RECEPTACLE, DRYER RECEPT, 30A  
EXTRACTOR RECEPT TO MATCH EXTRACTOR PLUG
- DATA/TELEPHONE DROP, PROVIDE 1-RJ-45 & 1-RJ-11 JACK IN  
SINGLE GAIN BOX. PROVIDE 3/4" EMT CONDUIT W/ PULL STRING  
TO & ABOVE CEILING FOR DATA WIRING BY OWNER.
- SUSPENDED FLUORESCENT FIXTURE. SEE SCHEDULE
- FLUORESCENT TROFFER. SEE SCHEDULE
- SURF MT FLUORESCENT WRAP. SEE SCHEDULE
- RECESSED SHOWERLIGHT, SEE SCHEDULE
- OUTSIDE WALL MT FIXTURE, SEE SCHEDULE
- SELF POWERED COMB EMERG/EXIT LIGHT, L.E.D. W/BATT & CHGR
- SELF POWERED EMERG/EXIT FIXTURE W/BATT & CHGR
- REMOTE EMERG/EXIT HEAD POWERED FROM EXIT LIGHT
- TOGGLE SWITCH, 3-WAY, 120V, 20A, W/ORT W/ W/ORTCOVER PLATE  
HOME RUN TO LIGHTING PANEL. PANELBOARD & CIRCUIT INDICATED
- FAN POWER CIRCUIT FROM AHU, 3-NO 12 IN 1/2" CONDUIT
- DISCONNECT SWITCH, SQUARE D CLASS 3190 OR EQUAL.  
NEMA 1 ENCL. INSIDE, NEMA 3R OUTSIDE.
- PANELBOARD, SEE PANEL SCHEDULE. PROVIDE TYPED LOAD  
CARD IN PANEL DOOR
- WIRING RUN CONCEALED BENEATH SLAB OR UNDERGROUND  
POWER CONTINUATION CIRCUIT, 3-NO 12 IN 1/2" CONDUIT OR MC CABLE
- 4X4X2 METALLIC JUNCTION BOX W/ COVER
- EXHAUST FAN, SEE MECHANICAL DRAWINGS
- GROUND CABLE, NO. 4 BARE CU, RUN 12" BELOW FIN GRADE  
DATA/CORR BACKBOARD, 2X4 3/4" A/C PLYWOOD, PAINT  
TO MATCH WALL.
- DRIVEN AND DRIVE 3/4X10" SECTIONAL COPPERCLAD GROUND  
UNTIL 5 OHMS RESISTANCE IS REACHED.
- FUSED MOUNTED PULL BOX, 307X30" NON-METALLIC, W/ COVER  
10,000 LB LOAD RATING, HIGHLINE OR EQUAL.
- LIGHTING CONTRACTOR, POLES AS REQ'D, 120V, 20A CONTACTS W/ H-D-A SW

CONNECTED LOAD SCHEDULE				
PANEL	LOAD (KVA)			TOTAL
	HVAC	EQUIPMENT	LIG & REC	
O	16	WTR HT 5	12	33
M	12	11	10	33
MS	24	0	12	36
TOTALS	52	16	34	102
TOTAL CONNECTED LOAD				102 KVA

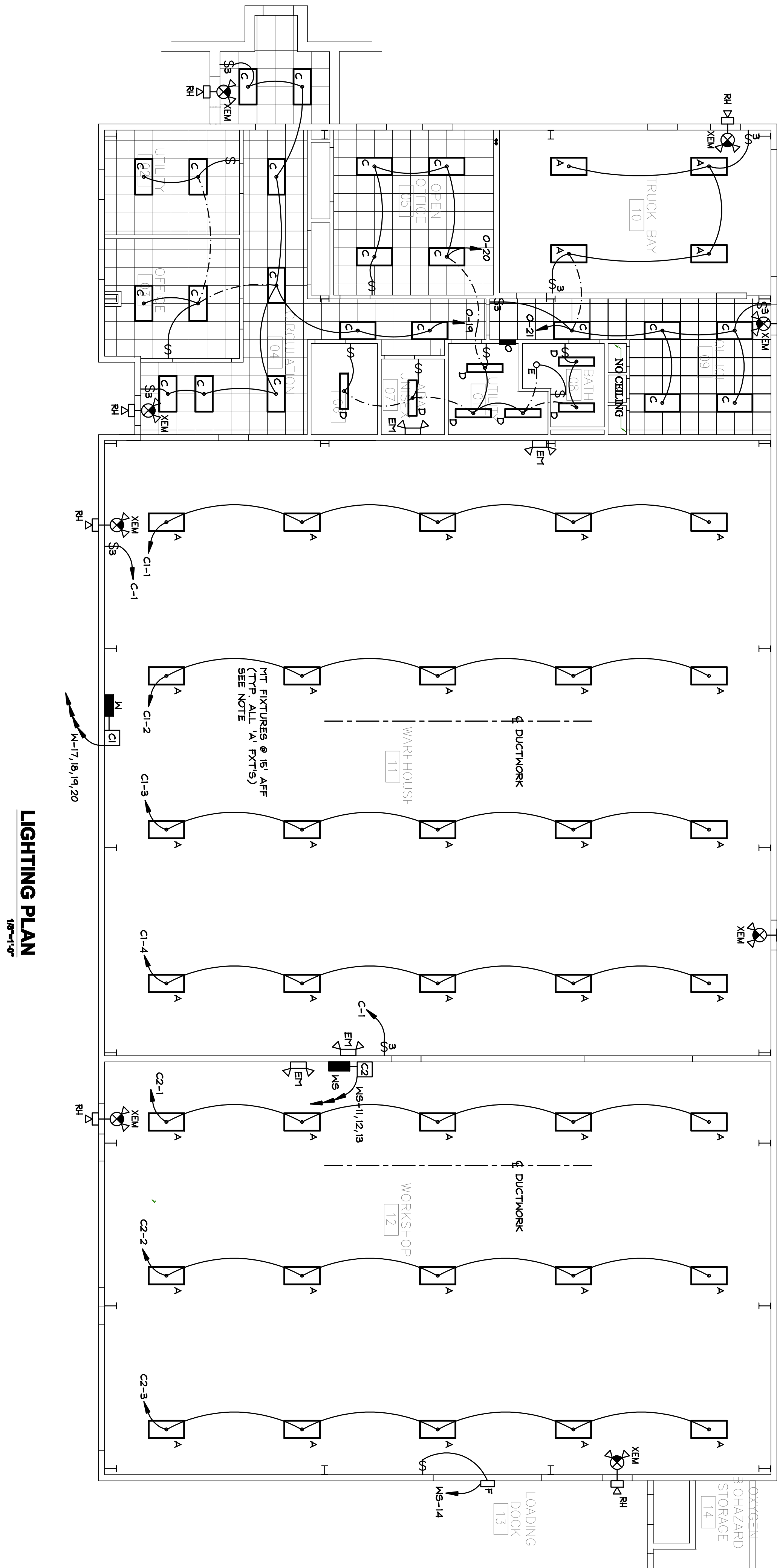
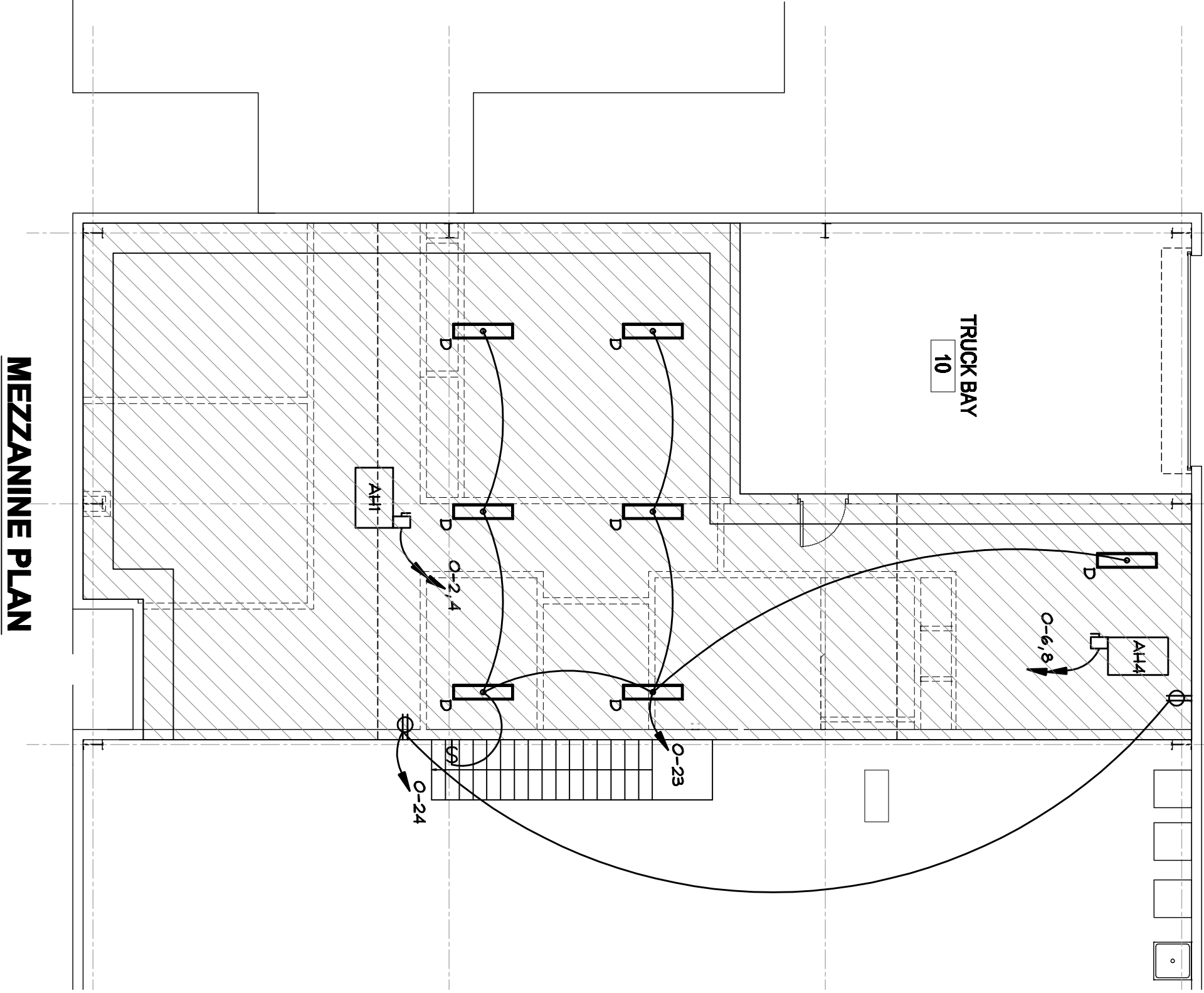
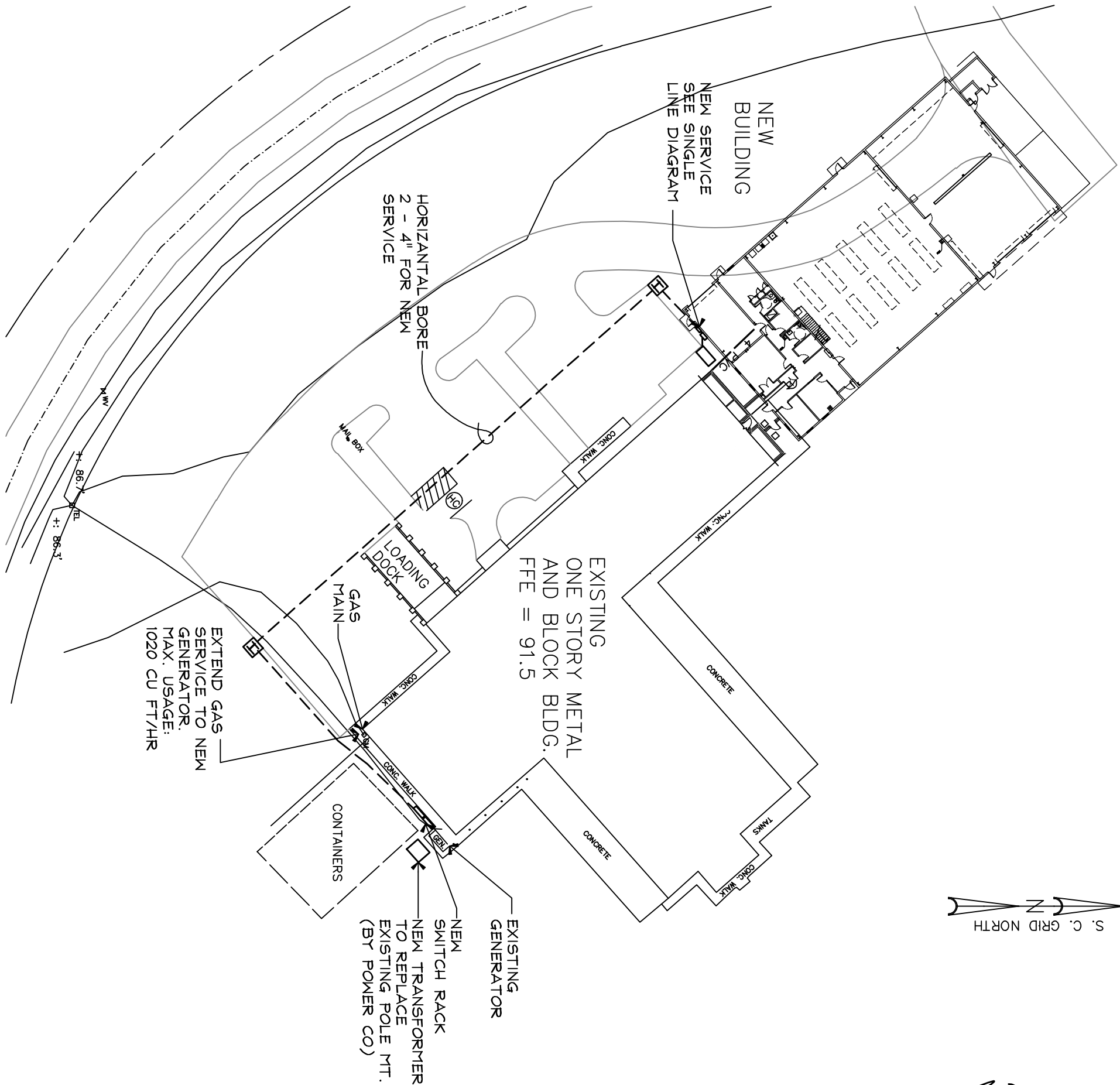
NOTES

- ALL WIRING TO BE PER 2008 N.E.C. AND THE COLLETON COUNTY, SC ELECTRICAL CODE
- ALL WIRING TO BE 75 DEG C TYPE THHN/THHN INSULATION COPPER CONDUCTOR UNLESS NOTED OTHERWISE (UNO). RUN IN CONDUIT. CONCEALED PANELBOARD BRANCH CIRCUITS MAY BE TYPE MC CABLE
- INTERIOR CONDUIT TO BE EMT, UNDERGROUND CONDUIT TO BE SCHEDULE 40 PVC, UNO, FLEXIBLE CONDUIT TO BE METALLIC EXTERIOR FLEX TO BE PVC COVERED
- CONTRACTOR IS TO COORDINATE SERVICE INSTALLATION WITH POWER CO
- ALL MECHANICAL EQUIPMENT SIZES AND LOCATIONS ARE TO BE VERIFIED WITH THE GENERAL CONTRACTOR BEFORE INSTALLING FEEDER CIRCUITS. ANY DISCREPANCIES BETWEEN ACTUAL EQUIPMENT ELECTRICAL REQUIREMENTS AND THAT SHOWN ON THE DRAWINGS SHALL BE BROUGHT TO THE ATTENTION OF THE ENGINEER
- ALL PENETRATIONS OF RATED WALLS TO BE FIRE STOPPED TO RATING OF WALL
- ALL MACHINE CONNECTIONS TO BE MADE IN FLEXIBLE CONDUIT
- REWORK GROUNDS TO COMPLY WITH 2008 NEC GROUNDING REQUIREMENTS

LIGHT FIXTURE SCHEDULE

TYPE	MFR	VOLTS	PART NO	LAMPS	BALLAST	COMMENTS
A	WILLIAMS	120	GL-4-43278-MD-EBH48/3	6-F32T8/850	ELECTRONIC	SUSPEND @ 15' AFF
B	WILLIAMS	120	GL-4-43278-MD-EBH48/3	4-F32T8/850	ELECTRONIC	SUSPEND @ 13' AFF
C	WILLIAMS	120	T8T-24-432-SA12-EB	4-F32T8/741	ELECTRONIC	RECESSED TROFFER
D	WILLIAMS	120	V8-20-4-2F32-A-WET-EB	2-F32T8/741	ELECTRONIC	SURF MT
E	CAPRI	120	R10/SH16CP	26W SPIRAL CFL	ELECTRONIC	SHOWER
F	WILLIAMS	120	ML3-400HP9-1POG-120	400W HPS	ELECTRONIC	OUTSIDE WALL MT
G						
EH	INTENSE		IE6	10M IPR16		EMERGENCY LIGHT
XEM	CHLORIDE		S12L-T6-1-R-M	LED 6V/T6		EXIT W/ EMERG. LTS
RH			S-T66-M-G	6V/T6		REMOTE EMERG. LT

PARTIAL SITE PLAN  
NO SCALE



REVISIONS

**E1**  
ELECTRICAL

**LIGHTING PLAN**  
PREPARED FOR COLLETON COUNTY, SC:  
**FIRE & RESCUE ADDITION**  
COLLETON COUNTY  
SOUTH CAROLINA

DATE: 01-28-13  
SCALE: AS NOTED  
DRAWN BY: DB  
CHECK'D BY: WJF  
PROJECT NO: **N/A**

**WILLIAM J. FIELDER, P.E.**  
ELECTRICAL ENGINEER  
P.O. BOX 2123, BLUFFTON, S.C. 29910  
843-757-4833

**LIGHTING PLAN**  
PREPARED FOR COLLETON COUNTY, SC:  
**FIRE & RESCUE ADDITION**  
COLLETON COUNTY  
SOUTH CAROLINA