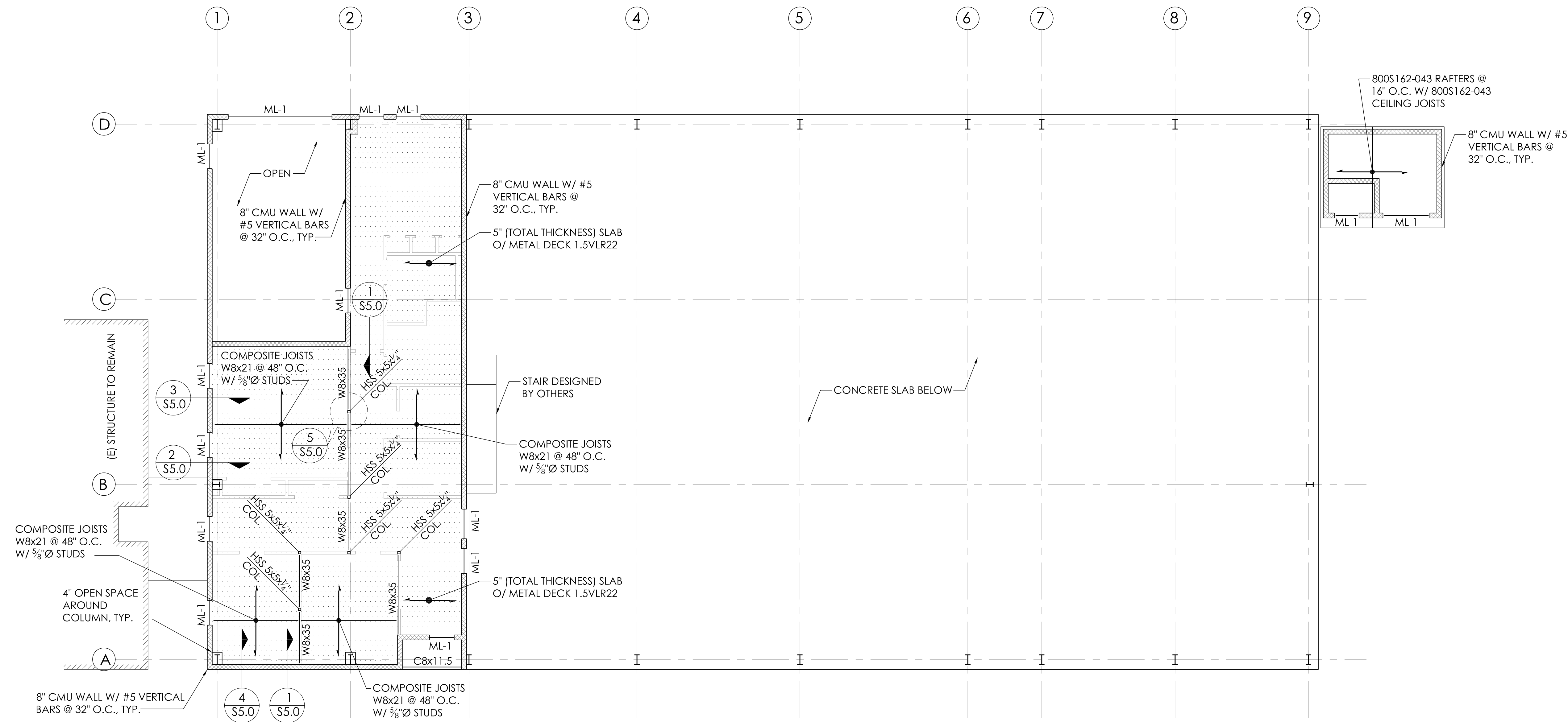


NOTE TO METAL BLG. MFR.

USE ONLY PORTAL FRAMES FOR LATERAL BRACING.
DO NOT USE X-BRACING. SEE ARCH. PLAN FOR
PORTAL FRAME LOCATIONS.

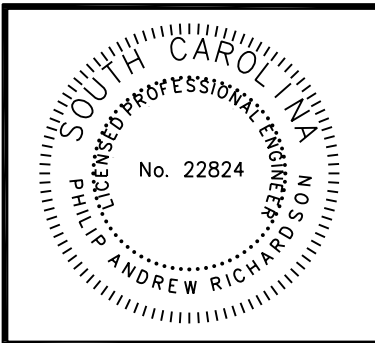
LINTEL SCHEDULE	
MARK	DESCRIPTION
ML-1	8" LINTEL BLOCK OVER DOOR W/ (2) #4 BARS EXTENDED 24" BEYOND JAMB & W/ AT LEAST TWO COURSE OF BLOCK ABOVE (24" TOTAL)



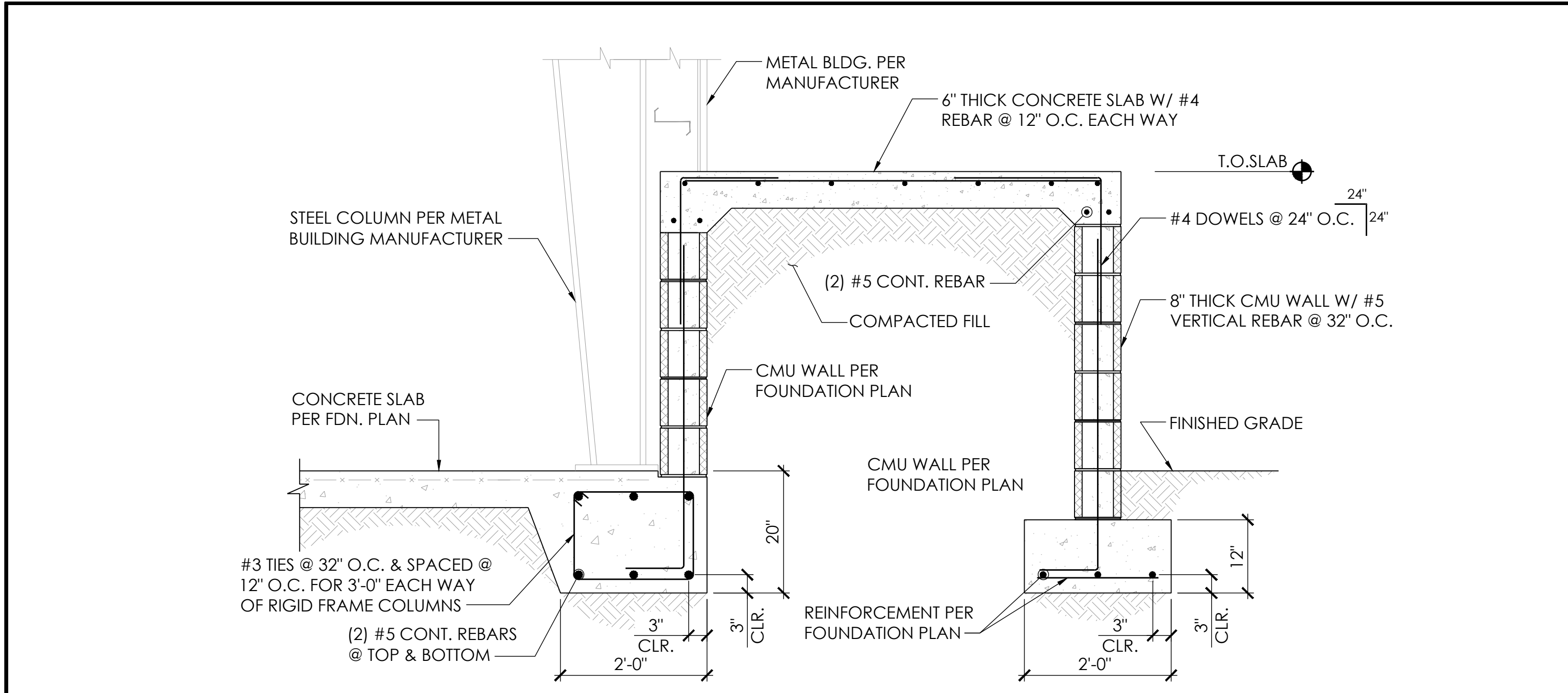
Structural Innovations, LLC
(843) 441-9828
1015 Mustelidae Road
Beaufort, SC 29902
www.structuralinnovationsllc.com

REVISIONS		DATE
No.	BY	

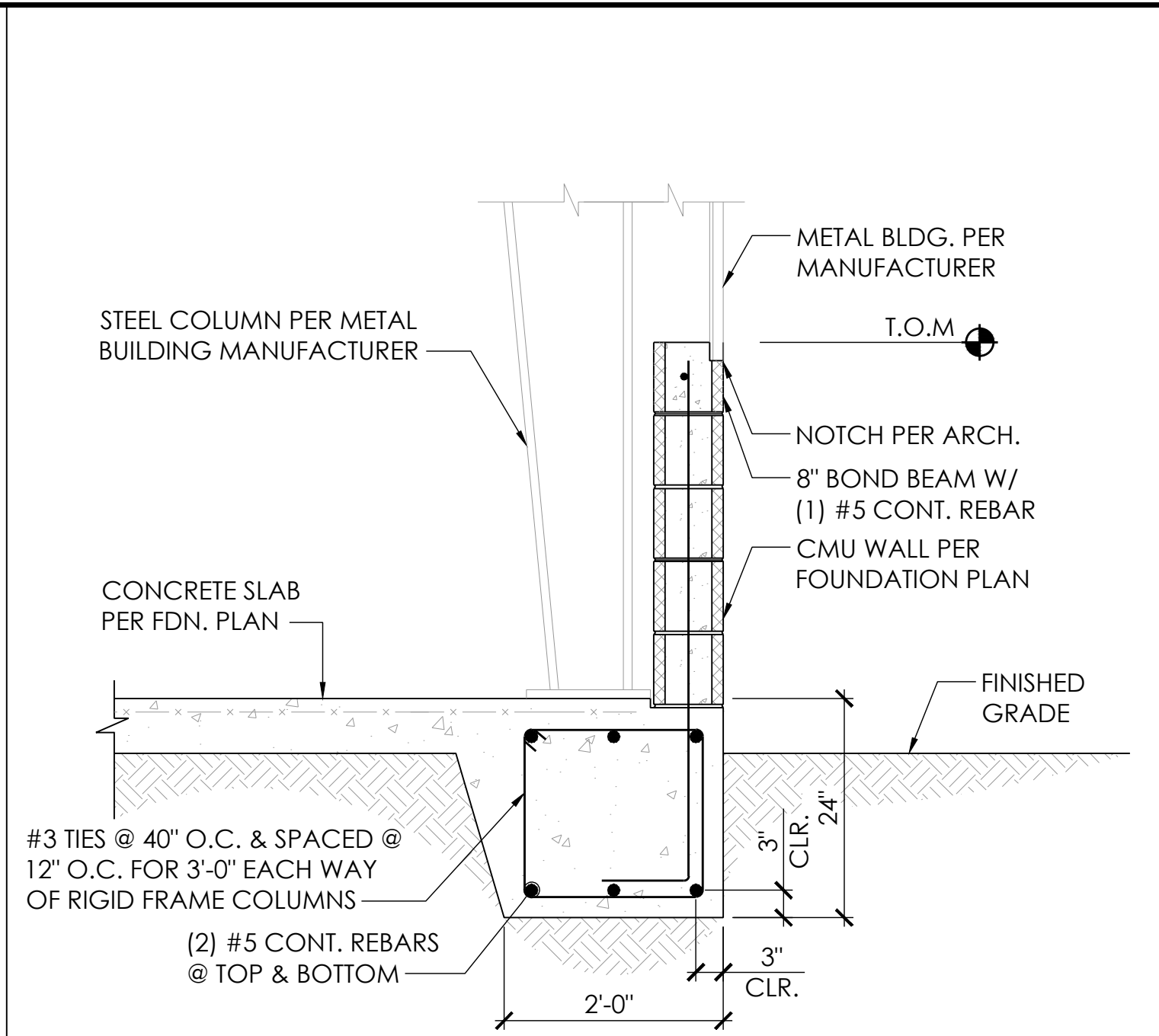
COLLETON COUNTY FIRE &
RESCUE HEADQUARTERS
COLLETON COUNTY, SC
MEZZANINE FLR. FRMG. & STORAGE ROOM ROOF FRMG. PLAN



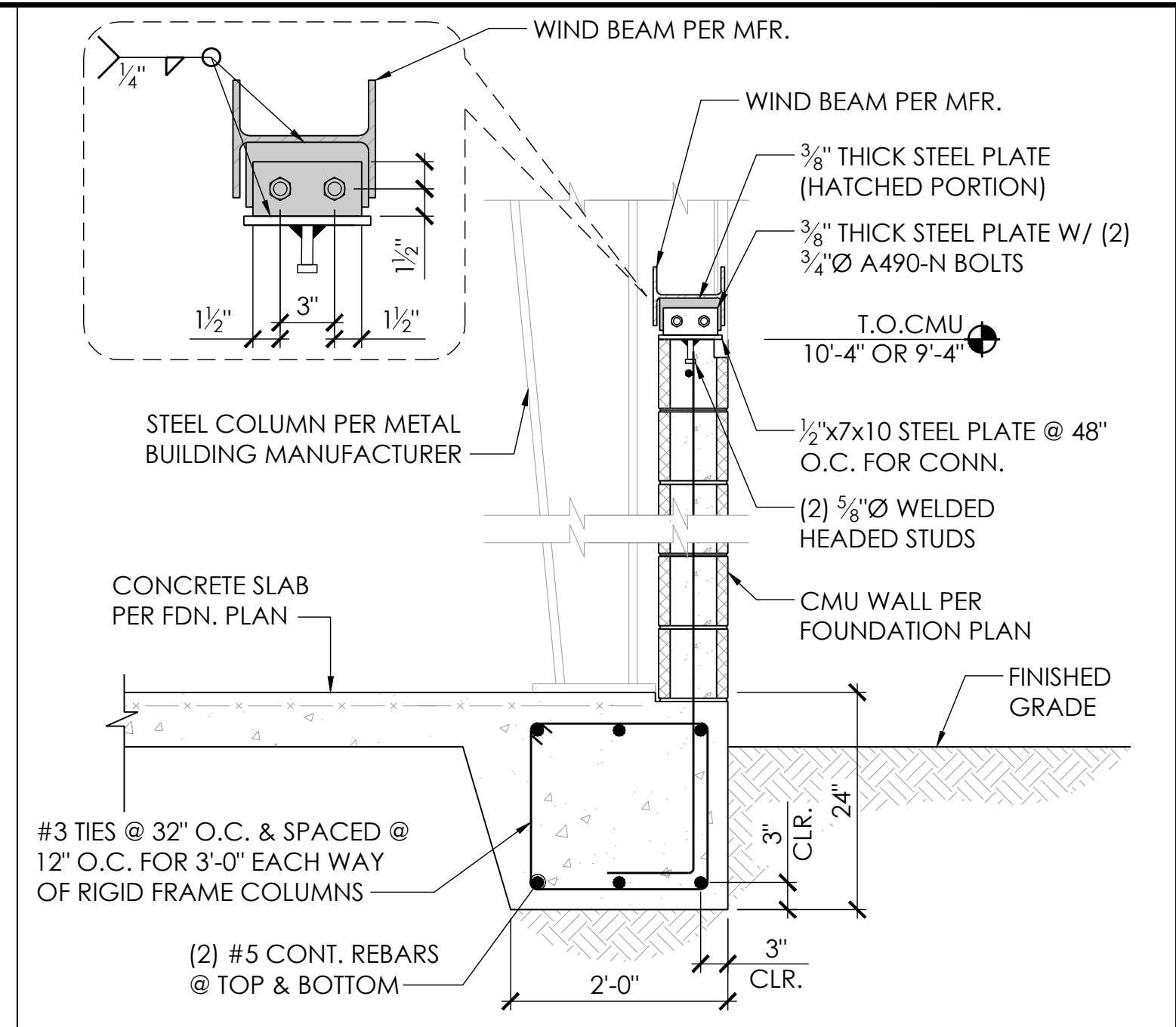
DATE: 03/18/13
SCALE: AS NOTED
PROJECT NO.: 13-14
S3.0



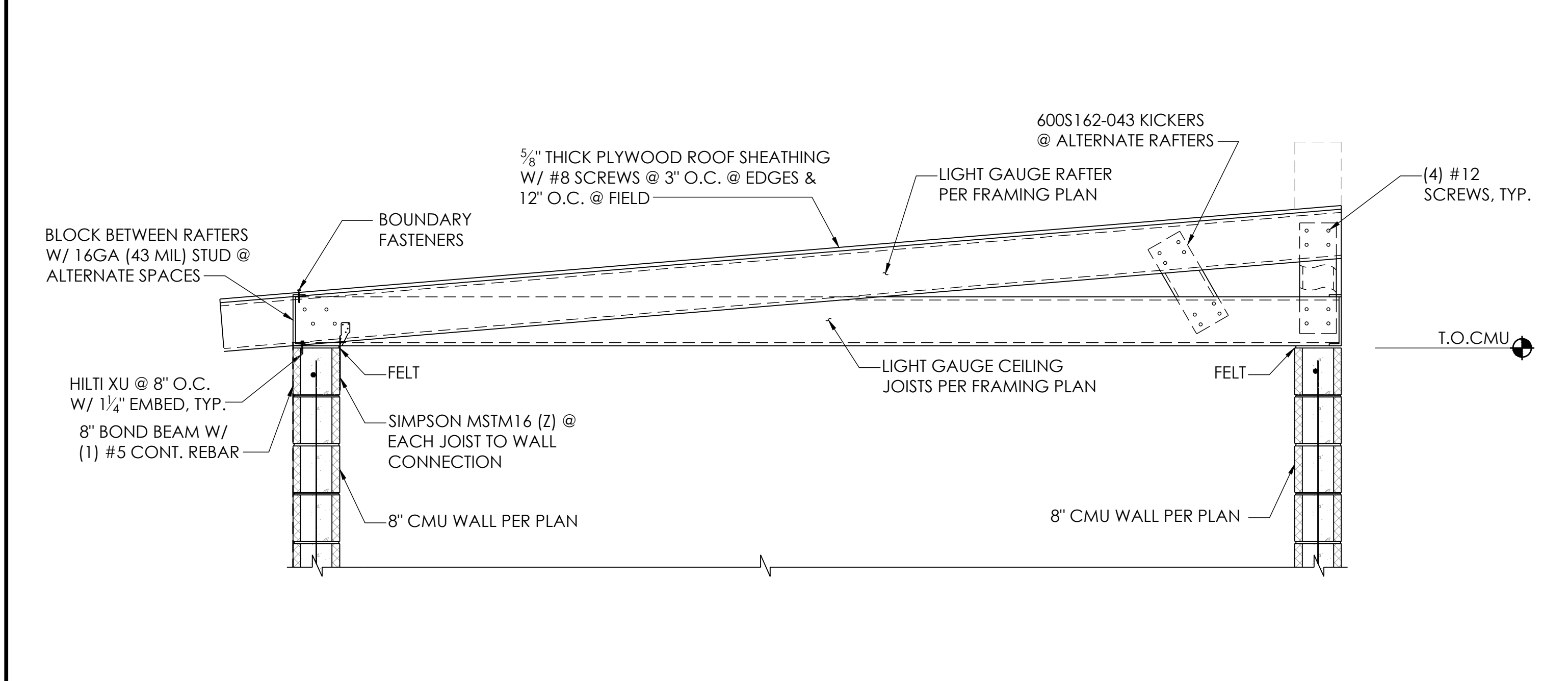
1 DETAIL @ LOADING DOCK SCALE: 3/4"=1'-0"



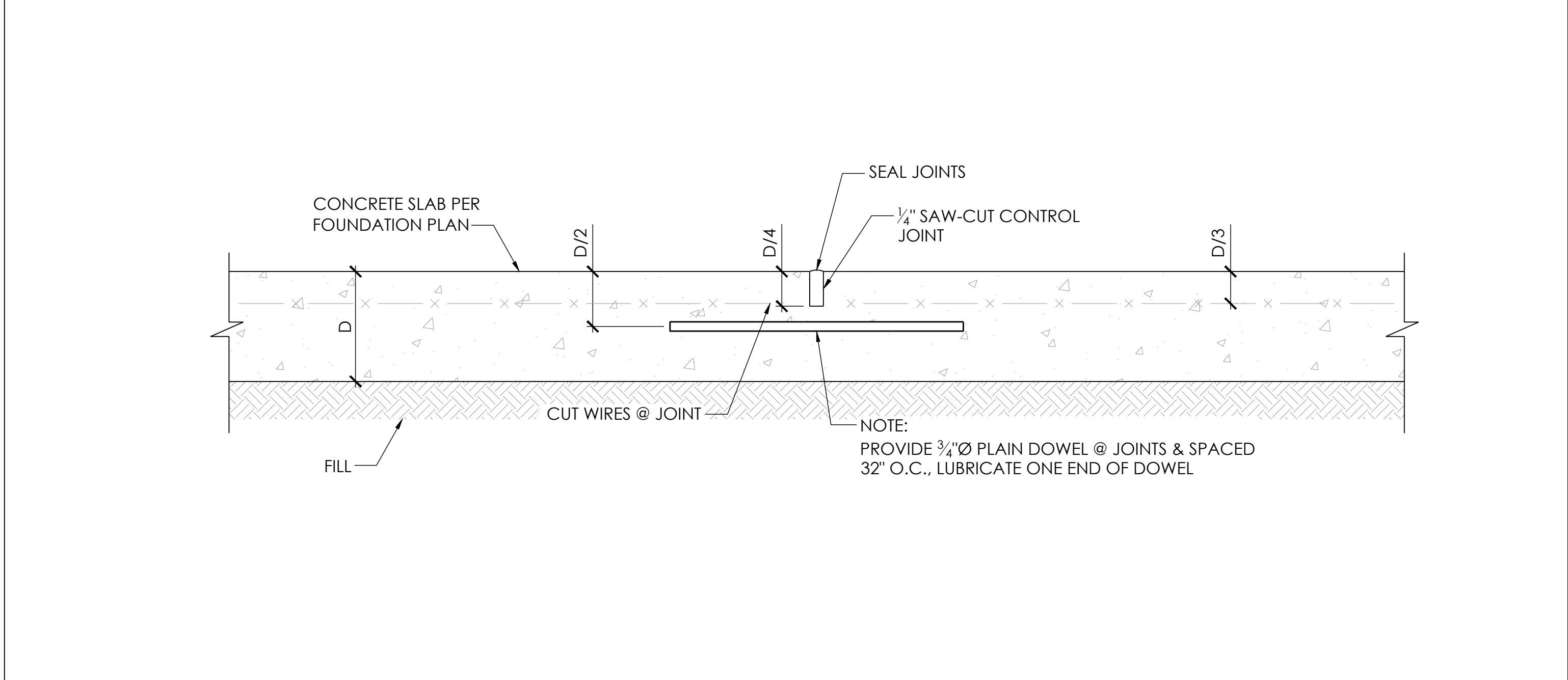
2 DETAIL @ EXTERIOR WALL SCALE: 3/4"=1'-0"



3 DETAIL @ MASONRY WALL TO WIND BEAM CONN. SCALE: 3/4"=1'-0"



4 DETAIL @ OPENING REINF. SCALE: 3/4"=1'-0"



5 CONTROL JOINT DETAIL SCALE: 3/4"=1'-0"

6 NOT USED

7 NOT USED

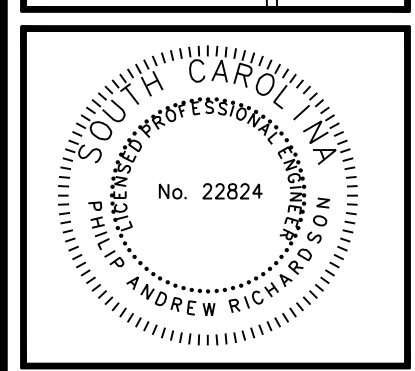
8 NOT USED

NOTE TO METAL BLG. MFR.
USE ONLY PORTAL FRAMES FOR LATERAL BRACING.
DO NOT USE X-BRACING. SEE ARCH. PLAN FOR
PORTAL FRAME LOCATIONS.

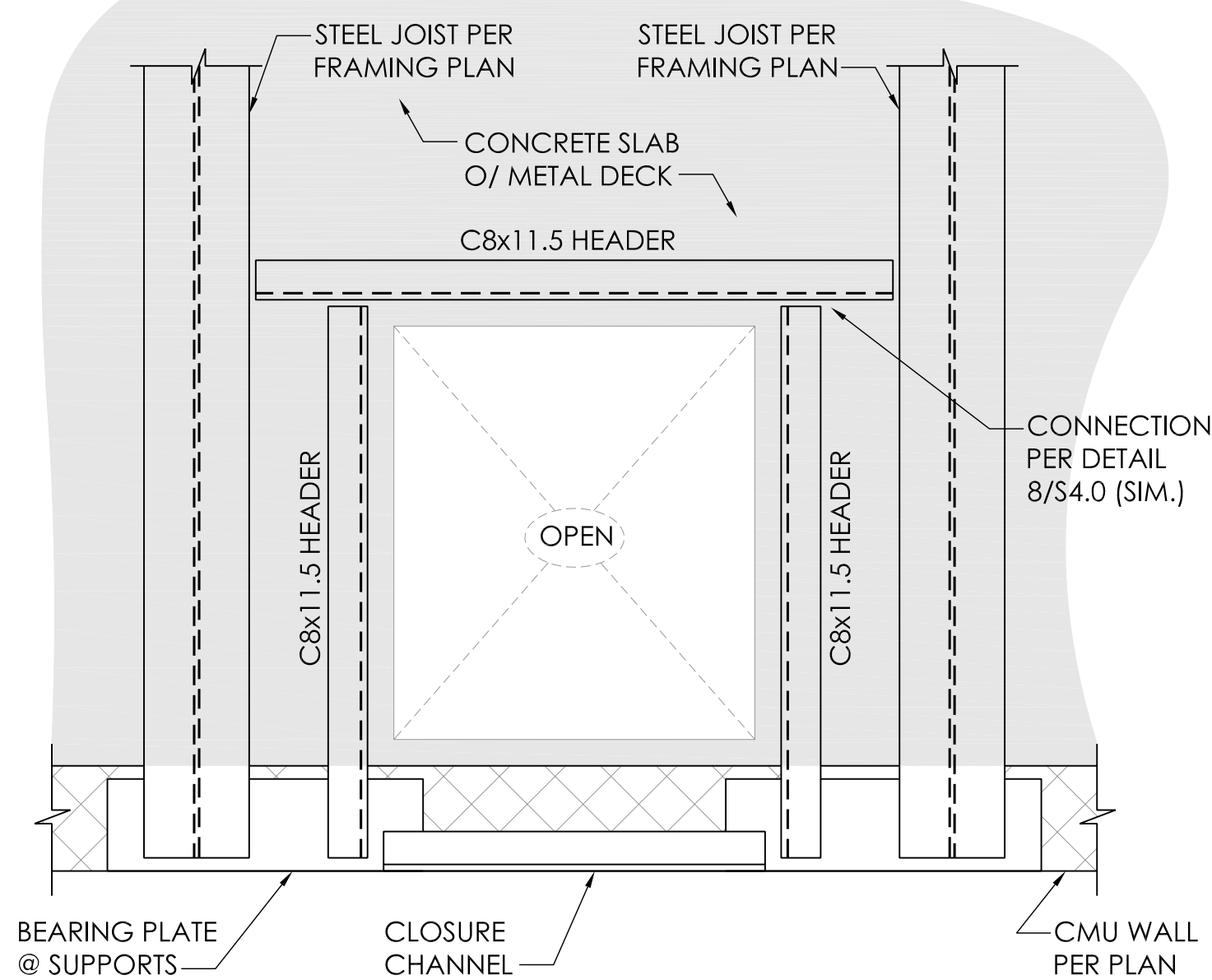
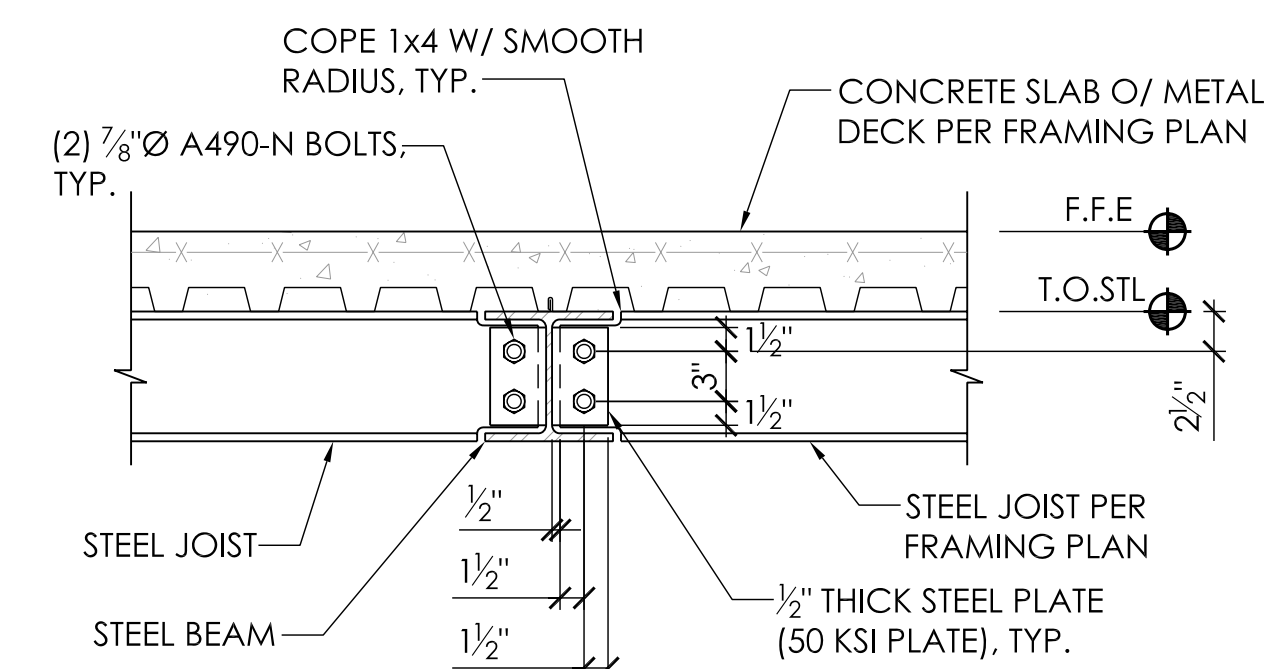
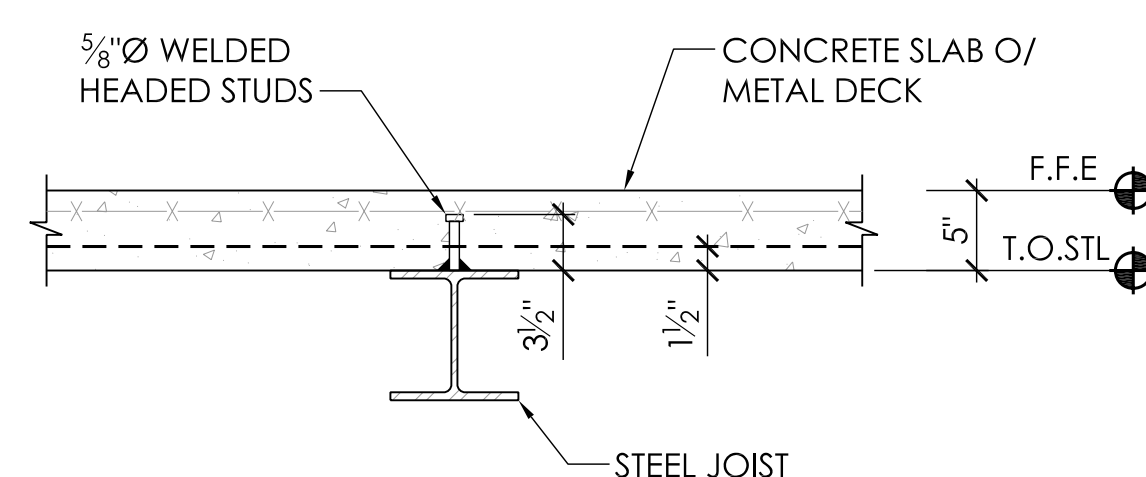
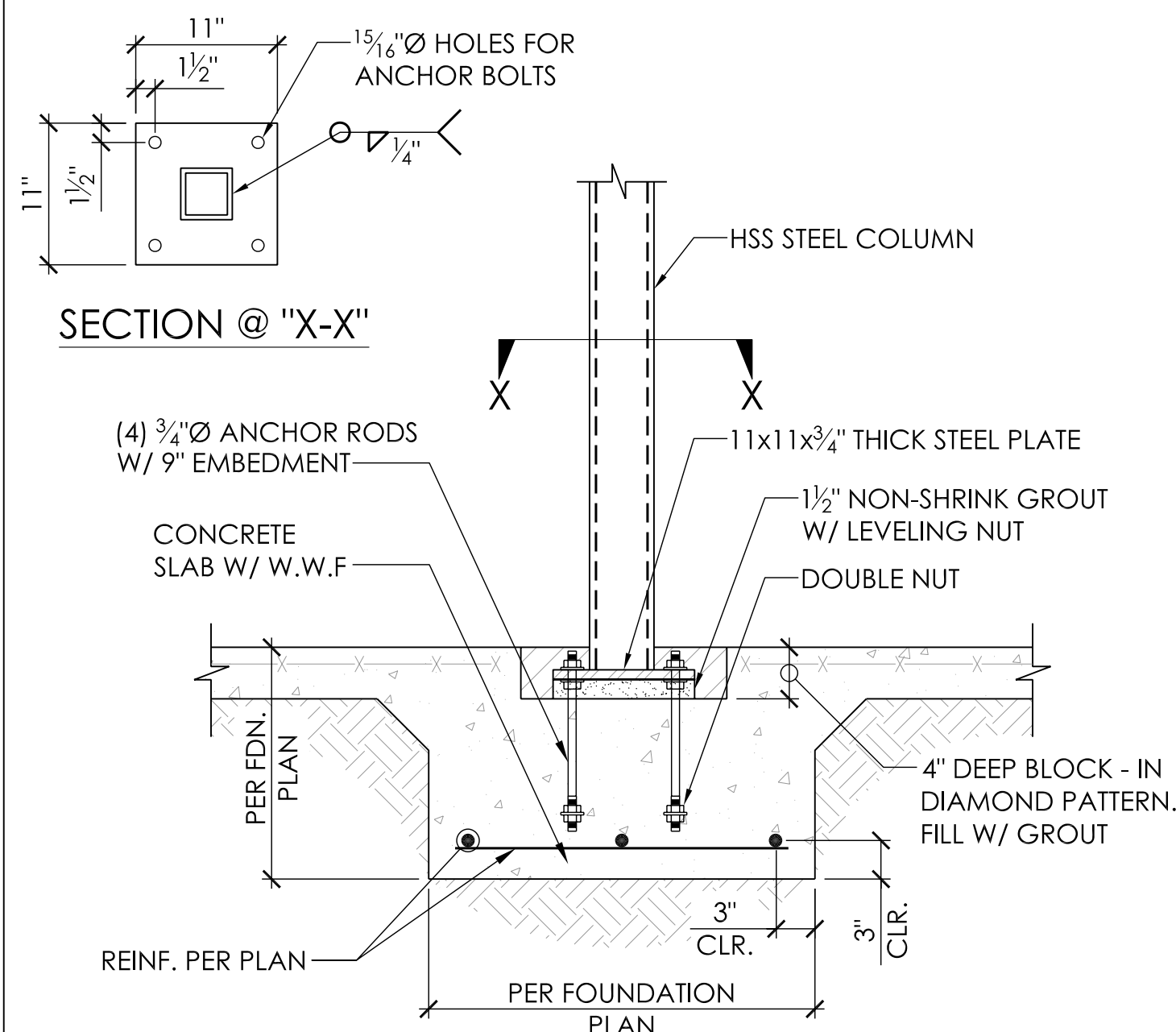
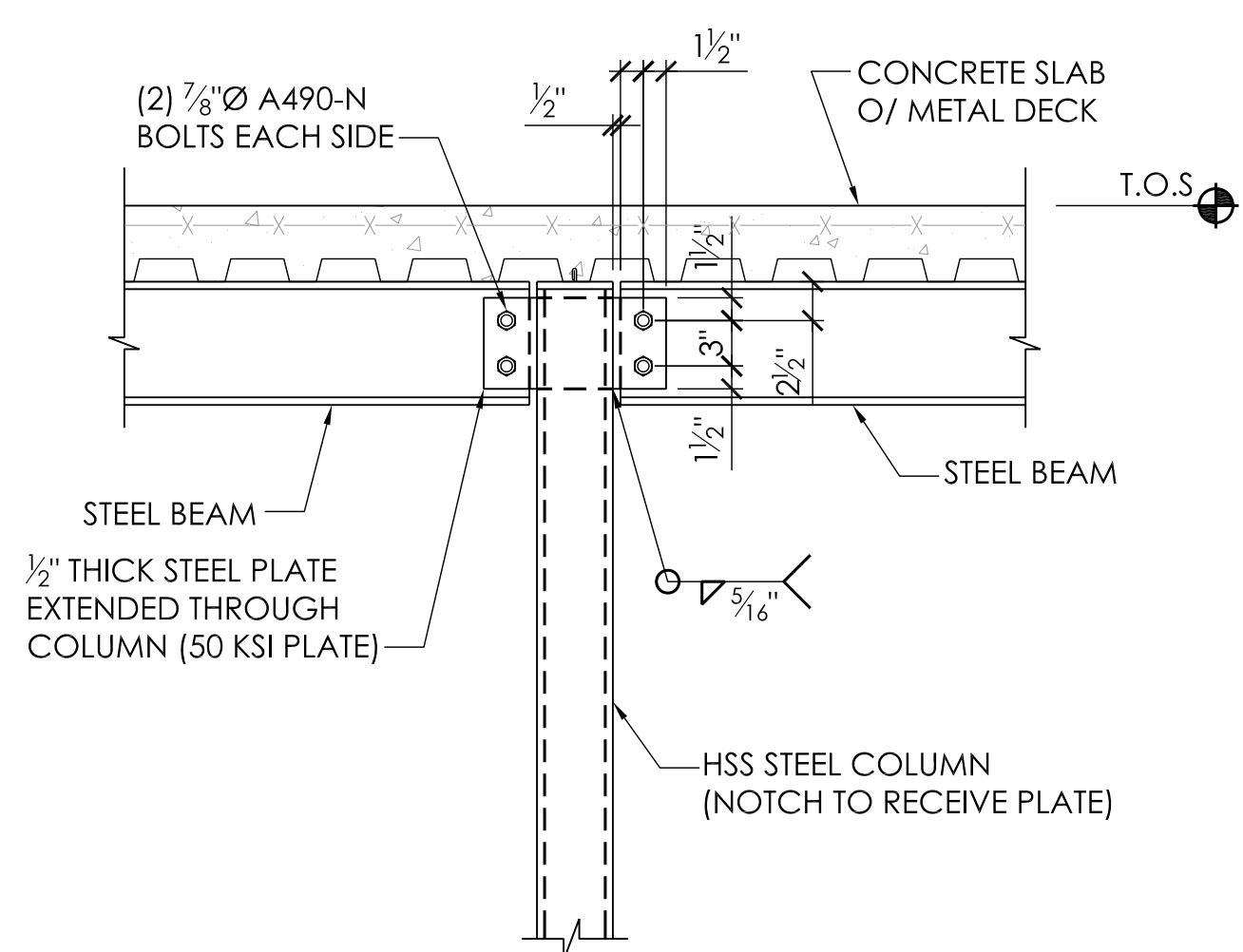
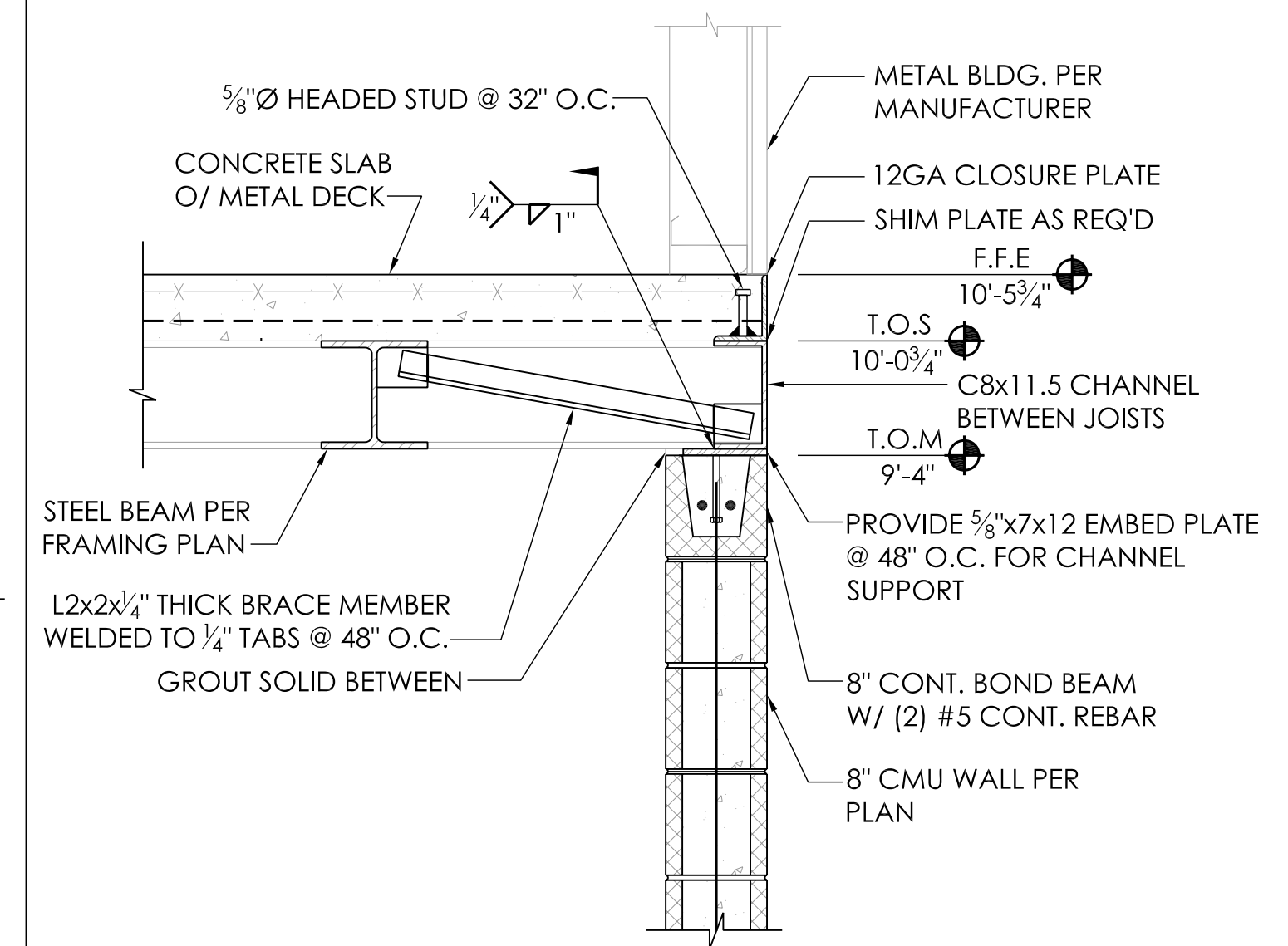
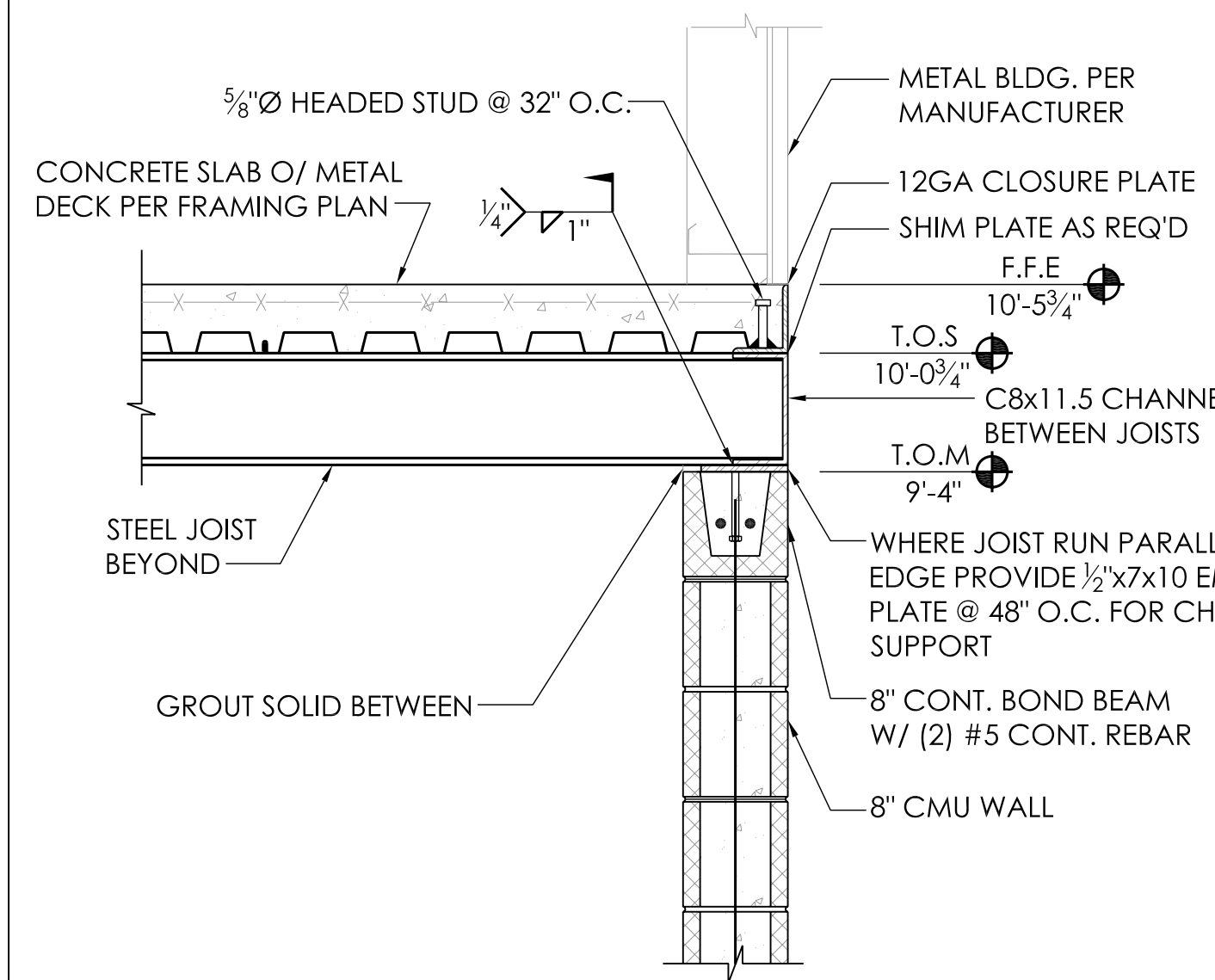
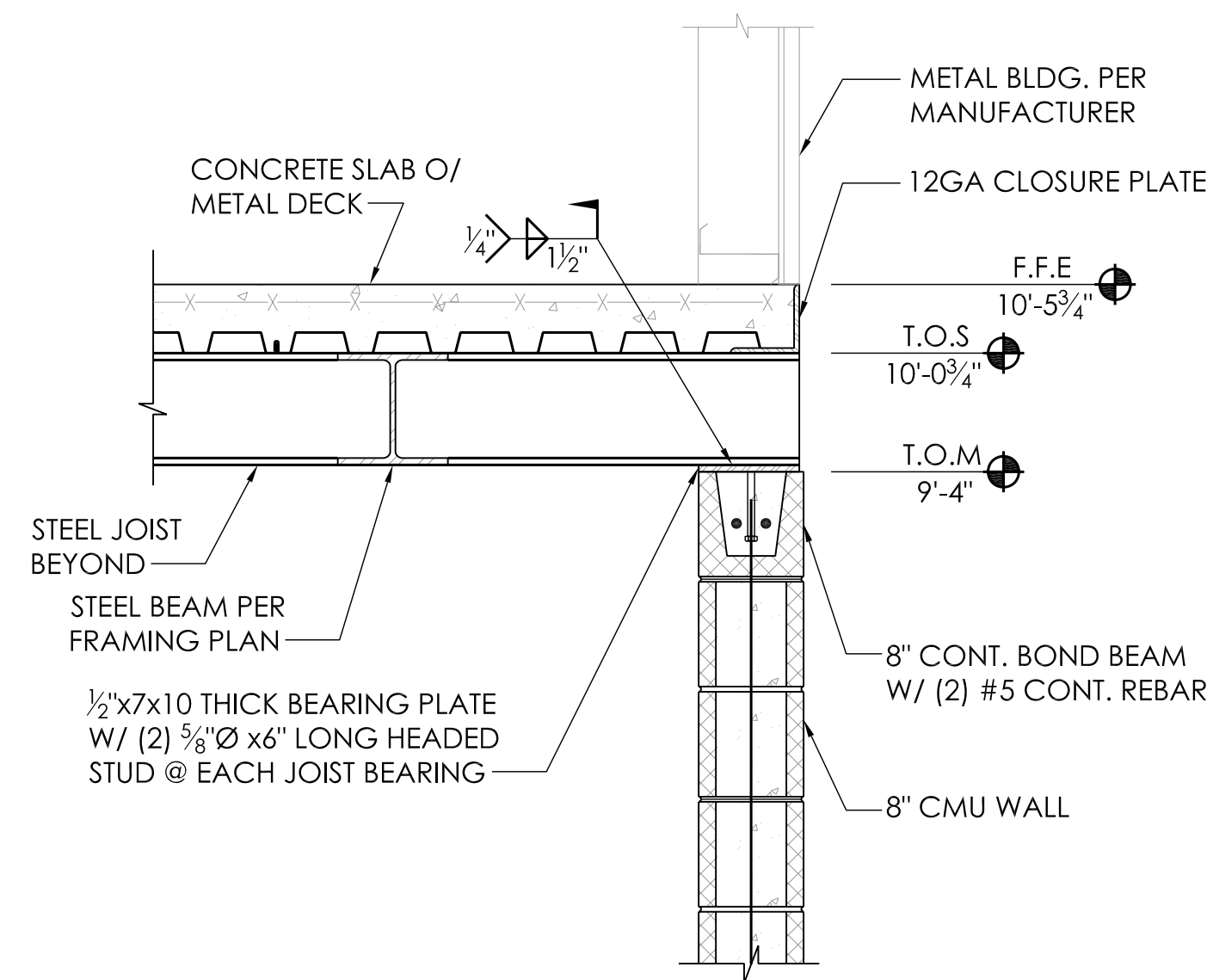
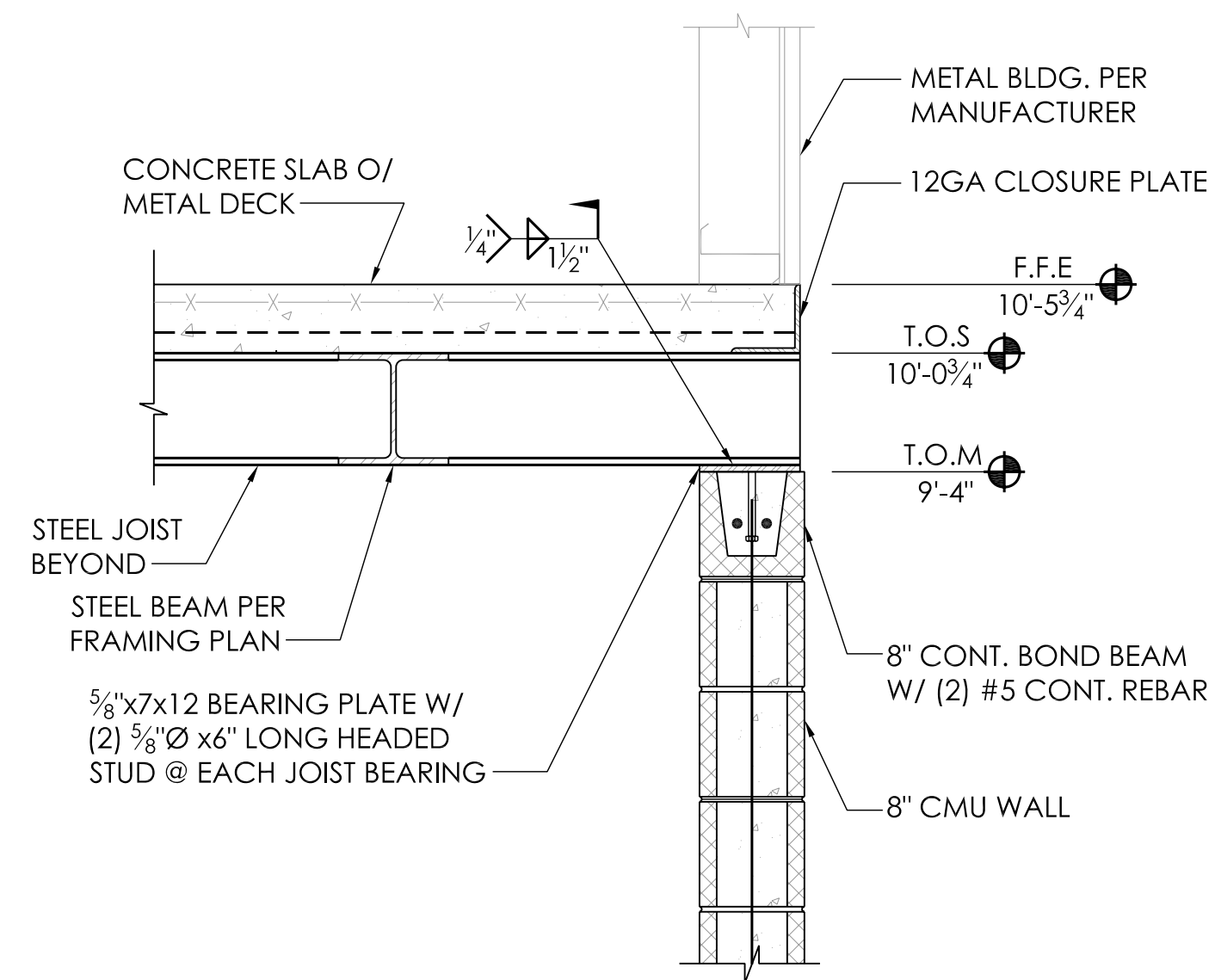
Structural Innovations, LLC
(843) 441-9828
1015 Mustelidae Road
Beaufort, SC 29902
www.structuralinnovationsllc.com

NO.	REVISIONS	BY	DATE

COLLETON COUNTY FIRE & RESCUE HEADQUARTERS
COLLETON COUNTY, SC
DETAILS



DATE: 03/18/13
SCALE: AS NOTED
PROJECT NO.: 13-14
S4.0



10 NOT USED

11 NOT USED

NOTE TO METAL BLG. MFR.

USE ONLY PORTAL FRAMES FOR LATERAL BRACING.
DO NOT USE X-BRACING. SEE ARCH. PLAN FOR
PORTAL FRAME LOCATIONS.